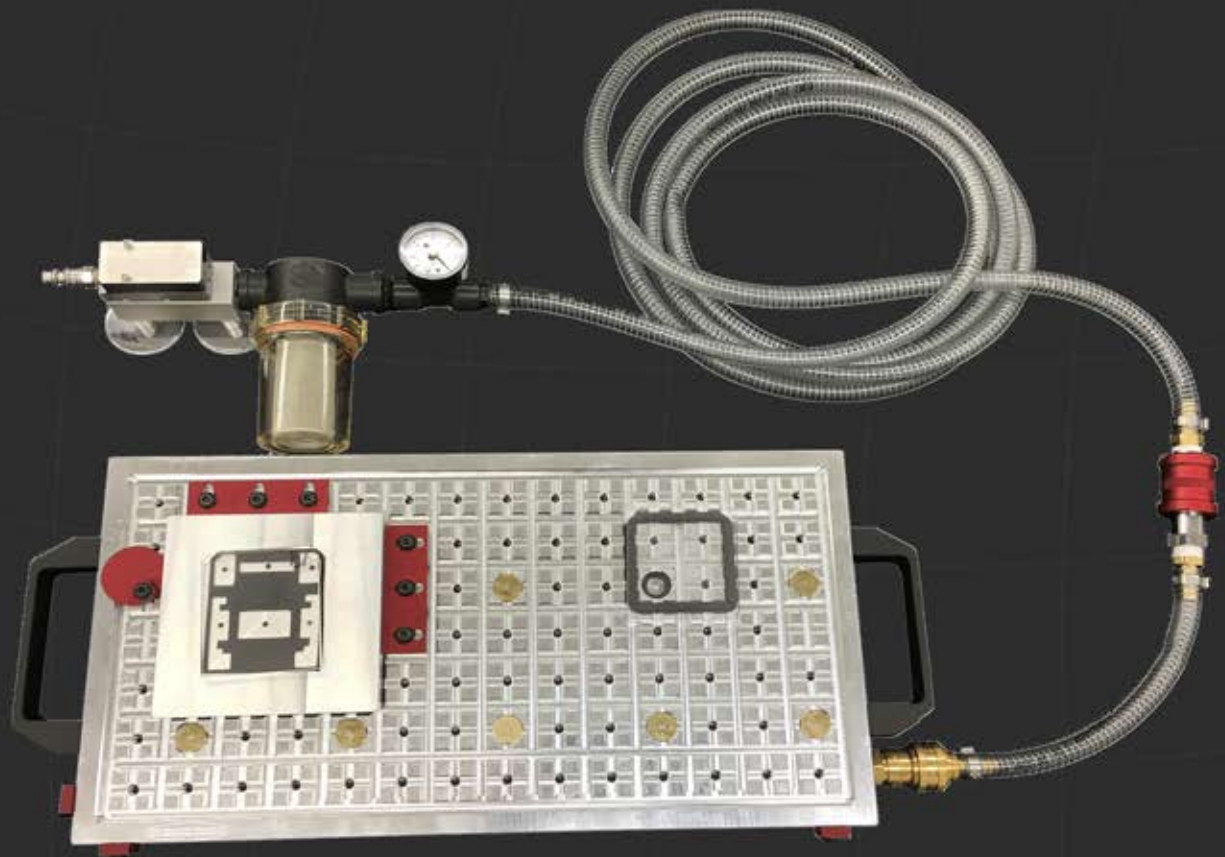


NEMI.COM

VACUUM PALLET CHANGER

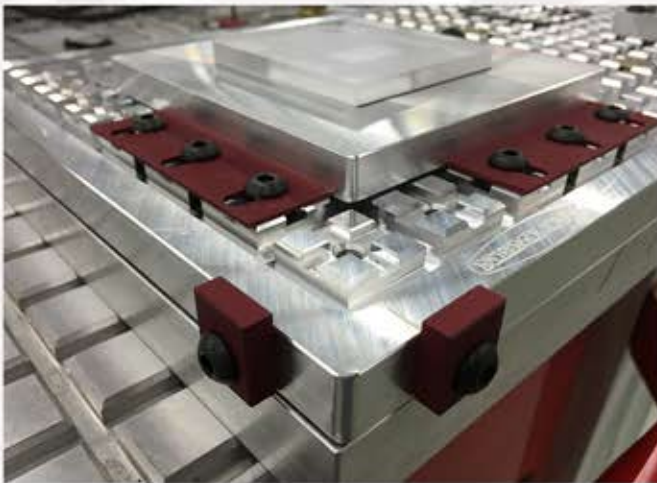
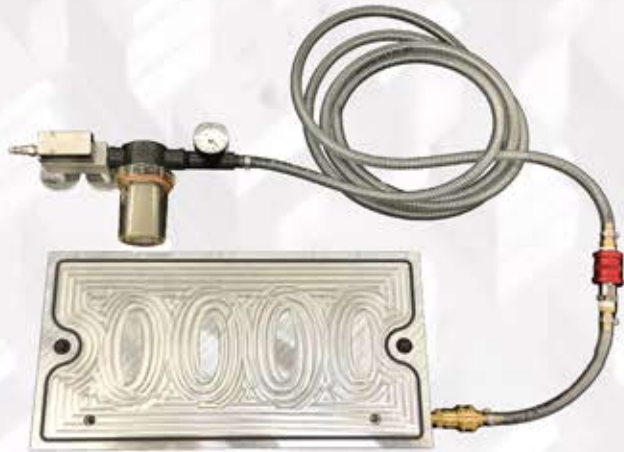


GET MORE EFFICIENCY OUT OF YOUR CNC MACHINE WITH A NEMI VACUUM PALLET CHANGER.

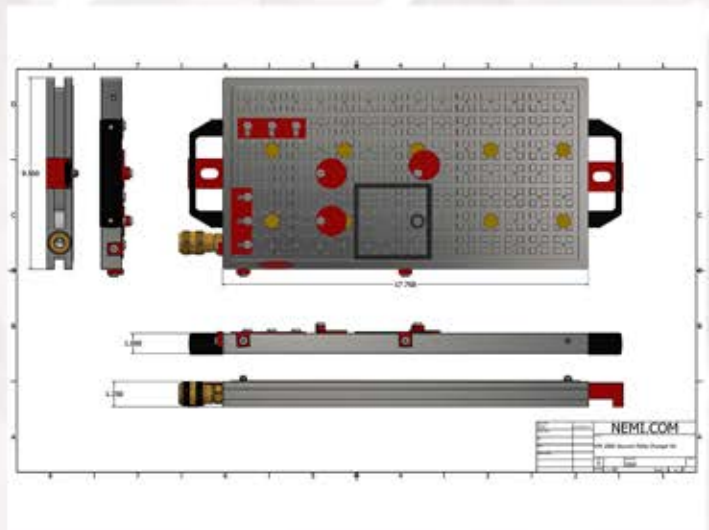
- *RELOCATE PALLET WITHIN .0005"**
- *SWITCH OUT YOUR VACUUM FIXTURES IN SECONDS**
- *EXTRA BLANK PALLET INCLUDED**
- *OVER 1 TON OF CLAMPING FORCE**
- *QUICK ROI**

**NORTHERN ENGINEERING & MANUFACTURING, INC.
ZIMMERMAN, MN 55398
763.856.2044
WWW.NEMI.COM**

VACUUM PALLET CHANGER



DIMENSIONS	9.5" X 17.768" X 1.25"
VACUUM AREA	168 SQUARE INCHES
MAXIMUM VACUUM HOLD DOWN	2481 LBS *BASED ON ALTITUDE
VACUUM PORTS	10



QTY	DESCRIPTION
1	VACUUM PALLET CHANGER BASE 9.5" X 17.75" X 1.250" TALL P/N 1818
1	VACUUM PALLET CHANGER BLANK PALLET 9.5" X 17.75" X 1.00" P/N 1819
1	VACUUM PALLET CHANGER NEMI GRID PALLET 9.5" X 17.75" X 1.00" P/N 1820
1	VACUUM PALLET CHANGER BAR FENCE/STOP 1" X 3.293" X .062" THICK, SET OF 2, P/N 1821
1	VACUUM PALLET CHANGER OD STOPS, SET OF 3, P/N 1822
1	VACUUM PALLET CHANGER CAM PUSHERS, SET OF 3 P/N 1823
1	(1) SHUTOFF VALVE - P/N 1360-375, (1) 4.03 CFM VACUUM GENERATOR - P/N 1278
5 FT	1/4" ROUND GASKET - P/N 796
10 FT	1/4 X 5/16 D GASKET P/N 1285
13	DOUBLE SEAL VACUUM PLUGS P/N 1258
13	VACUUM SEALS P/N 725

NORTHERN ENGINEERING & MANUFACTURING, INC.
ZIMMERMAN, MN 55398
763.856.2044
WWW.NEMI.COM